

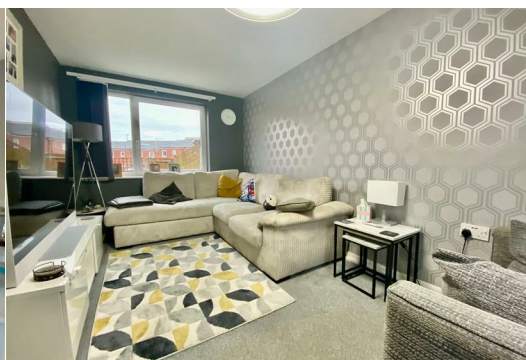


## 241 London Road Hempsted Peterborough PE7 0LF

Guide price £86,000



\*\*\* 40% SHARED OWNERSHIP \*\*\* Well presented throughout is this modern end terraced home located on the popular development of Hempsted. Accommodation offers two double bedrooms, downstairs cloakroom, kitchen diner with integrated appliances, living room, gas central heating, double glazing and enclosed garden to rear. Two allocated parking spaces. \*\*\* IDEAL FIRST TIME BUY \*\*\*



- Entrance Hall
- Kitchen/Diner 4.78m (15'8") x 2.58m (8'5")
- Cloakroom
- Lounge 4.78m (15'8") x 2.61m (8'7")
- First Floor Landing
- Bathroom
- Bedroom 1 4.78m (15'8") x 2.61m (8'7")
- Bedroom 2 4.02m (13'2") x 2.65m (8'8")

Area Map



Floor Plans



Energy Efficiency Graph

